



# PROGRAMS & INITIATIVES





## Vision Statement

To cure myeloma by fostering research, education and excellence in clinical care worldwide.

## Mission Statement

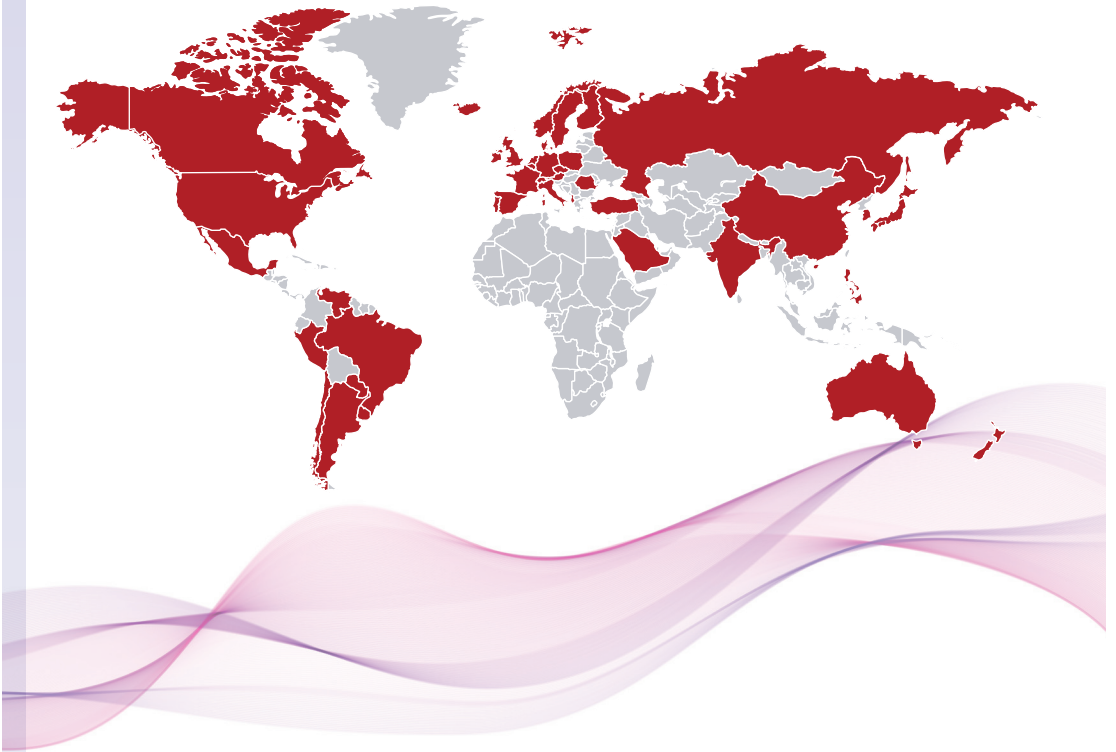
The International Myeloma Society (IMS) promotes education, research and clinical care globally by:

- Building a global myeloma community
- Educating for today and the future
- Fostering clinical and translational research in myeloma
- Assuring clinical excellence worldwide

## Our Membership

The International Myeloma Society has members in 52 countries. All Physicians and Researchers with an interest in myeloma are invited to become members.

Trainees can apply to be members-in-training at a special rate. Industry representatives and allied health professionals are welcome to become associate members.





# EDUCATIONAL PROGRAM



## IMS Annual Meeting

The International Myeloma Society Annual Meeting is the leading annual meeting in myeloma, focusing on basic, preclinical, and clinical aspects of multiple myeloma and related plasma cell disorders.

Taking place in Los Angeles from August 25-27, this year's meeting will have 6 Core educational themes:

- Disease Monitoring
- High-Risk Multiple Myeloma
- Induction for Newly Diagnosed Myeloma
- Relapsed Multiple Myeloma
- Immune Constitution and Vaccination
- Cellular Therapies

Each session will include:

- Four top abstracts pertaining to the theme of the session
- A summary of findings put in context with the current state of the field
- Challenges and future directions
- Roundtable discussion with senior faculty and audience interaction



Other sessions will include “Meet the Expert” session, Career Development Workshops, Keynote speakers, joint-symposia and more.

The 20th Annual Meeting will take place in Athens Greece from September 27-30, 2023, and the 21st Annual Meeting will take place in September 2024 in Rio de Janeiro, Brazil.

The meeting was previously biennial, and the decision to make the meeting a yearly event, was made due to the tremendous growth in the field. With the fast-paced development of drugs, increased approvals and the fact that 44% of publications in multiple myeloma were published in the past year, the need for an annual meeting was apparent. This need has been reflected in the attendance of our meetings with over 3,100 attendees at our 2019 in-person meeting in Boston and 3,750 at our hybrid 2021 meeting in Vienna, the IMS is anticipating over 4,000 attendees at our 2022 meeting.

## Efforts

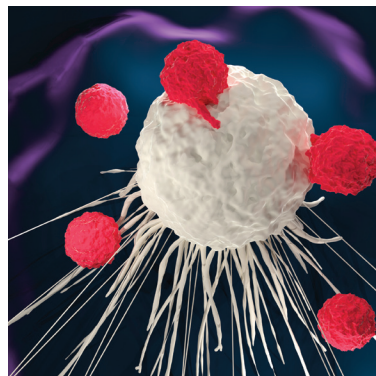
One of the most important goals of IMS is to provide clinically focused education to practicing oncologists worldwide. The IMS accomplishes this mission by providing educational forums in the form of workshops conducted around the globe.

The goal for the Educational Workshop is to share with local hematologists state-of-the-art methods in diagnosis, monitoring and treatment of plasma cell malignancies paying special attention to the current practice in the local countries and the opportunities for improvement. We also offer the opportunity to establish potential collaborations with the invited speakers including the possibility of visiting the institutions or establishing fellowship programs.

The program includes lectures plus roundtable discussions around the most hot and controversial topics and case presentations to supplement didactic education. The format of the roundtable also includes the counterpoint opinion of the invited speakers with the local hematologists based on both challenging questions and clinical cases. Past programs have taken place throughout the world in countries including the United States, Chile, Greece, Brazil, and the Czech Republic.

## Workshop on Immune Effector Cell Therapies in Multiple Myeloma

Since 2019, the International Myeloma Society hosts an annual Immune Effector Cell Therapies in Multiple Myeloma Workshop to discuss various immune-based therapies in myeloma including CART cell clinical data and promising preclinical leads, review the latest correlative analyses exploring predictors of response and resistance

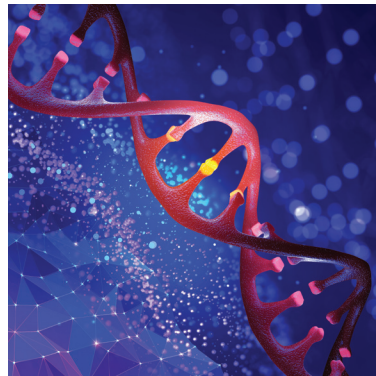


mechanisms, evaluate uniform practices in managing patients with CRS and other complications, and discuss next-generation cell therapy strategies, including “off-the-shelf” allogeneic and NK-cell based approaches. This year we also included a session on cell-engaging bispecific antibody-based approaches. The next Immune Effector Cell Therapies Workshop is planned for March 2023 in Boston, Massachusetts.

## Workshop on Genomics – Defining high-risk disease and developing targeted therapies

The IMS is preparing the first of a planned series of annual meetings on Genomics for the first quarter of 2023. This two-day meeting will take place in Europe and will be co-hosted by key thought leaders in Genomics from the United States, Spain and France. The initial invitation-only meeting will be didactic, focusing on the latest research in the following areas:

risk features, hyperdiploidy, incorporation of other platforms, targeted drugs, single-cell technology, micro-environmental impact of genomic subtype, myeloma heterogeneity, and genomic and transcriptomic changes driving drug resistance, chromatin structure and non-coding RNA.



## Collaborations with local societies

The IMS co-sponsors meetings and workshops organized by local myeloma societies around the world. The IMS provides insights for programs, speaker suggestions and educational content for these meetings to ensure content is free from conflict and bias. These workshops foster local participation while providing an international view on recent developments. In 2021-2022, IMS co-sponsored meetings in Poland, Israel and Argentina and future collaborations are being planned.



## Supporting Trainees

IMS believes that supporting trainees assures the future of myeloma treatment. The Society has a designated Career Development subcommittee, focused entirely on how the IMS can support postdoctoral fellows, trainees and other young investigators. The overwhelmingly successful Career Development Award has provided funding for 14 young investigators to

spend a year working in a lab in a different country, resulting in collaborations in 10 different countries. IMS also hosts special workshops for postdoctoral fellows at the annual meeting, as well as sessions in our other workshops throughout the year.



Through the Young Investigator Awards, the International Myeloma Society provides travel grants to young myeloma researchers to assist with expenses relating to their participation at the Annual Meeting. Since 2019, the IMS has provided awards to over 120 young investigators, who otherwise may not have been able to attend the meeting or present their research.





# RESEARCH INITIATIVES



## FUNDING OPPORTUNITIES

---

### International Myeloma Society (IMS) and Paula and Rodger Riney Foundation Translational Research Award

PAULA &  
RODGER **RINEY**  
FOUNDATION

**Goal:** To foster and support state-of-the-art investigator-initiated translational research that will contribute to improved prevention, early detection, diagnosis, and treatment of plasma cell disorders. Although focused on finding a cure for multiple myeloma, the areas of research is broad. This award will also encourage interaction between institutions to enhance collaborative research.

**Budget:** The grant will be an award between \$175,000 to \$250,000.

**Research areas:** Translational research projects in all areas of plasma-cell dyscrasia are eligible for this proposal. The Translational Research is defined in its broadest sense to include molecular assays, imaging techniques, drugs, biological agents,

and/or other methodologies applicable to the treatment of myeloma. The translational research projects may involve the use of any cellular, molecular, structural, biochemical, and/or genetic experimental approaches. By this definition, projects are permitted to move not only in the forward direction, toward clinical trials and studies in areas of prevention, early detection, treatment, and development of biomarkers, but also in the reverse direction, using human biospecimens, often from clinical trials, to study new phenomena, or to develop new targets and treatments based on results from human studies. The project must be focused on translational research that meets the definition provided above and results in clinical translation. The project must be dedicated to capitalizing on research opportunities that have the potential to change the current paradigm in the management of myeloma.

## Career Development Award

**Goal:** To foster the development of an academic career for young scientists pursuing research in the field of plasma cell disorders and to promote the development of the next generation of leaders in this field. This award will also encourage interaction between institutions to enhance collaborative research.

**Budget:** The grant will be an award of up to \$75,000 including the maximal allowable institutional overhead of 8%. This may include 1 year of salary support for the grantee, budget for visa status adjustment and travel allowance.

**Research areas:** Basic and translational research projects in all areas of plasma-cell dyscrasia are eligible for this proposal. Outcomes research and non-laboratory projects that do not require a stay abroad in a research laboratory do not qualify for full funding but may be considered to receive partial funding.



## IMS AWARDS



### Waldenström Lifetime Achievement Award

Named for Jan Waldenström, a pioneer in treating blood cancers, the Waldenström Lifetime Achievement Award has been given by the IMS at each International Myeloma Workshop since 1989. This award is given to outstanding researchers in recognition of their long term contributions to the myeloma field.

### The Bart Barlogie Clinical Investigator Award

In recognition to the outstanding research developed by Dr. Bart Barlogie in the field of multiple myeloma, the IMS Board of Directors established the Bart Barlogie Clinical Investigator Award. This award is aimed at formally recognizing and stimulating excellence in myeloma research.

The Bart Barlogie Clinical Investigator Award will be given to an investigator in recognition of their research in the myeloma field.

### Ken Anderson Basic and Translational Research Award

Established by IMS to honor the seminal contributions of Professor Ken Anderson to bench to bedside translational research. The Ken Anderson Basic and Translational Research Award will be given to an investigator to recognize excellence in translational research in myeloma

# ADVOCACY

## TO STIMULATE AWARENESS AND ACCESS

### Therapeutic MAP (TMAP)

The International Myeloma Society is focused on providing global support and educational tools to help oncologists and hematologists with treatment decisions for myeloma patients. Treatment for multiple myeloma has evolved very rapidly over

Available Regimen	
	Drug Combinations
Newly Diganosed MM	VRD,VTD,VCD, VTD-dara, Rd, Rd-dara, VMP, VMP-dara
First Relapse	rd-dara,lxa-Rd, KRD, KD-dara, PVD, Kd, Vd, Vd-dara
Relapse: 1-3 lines	Rd-dara, lxa-Rd, KRD, KD-dara, PVD, Kd, Vd, Vd-dara, PD, PCD, Isa-PD
Relapse: ≥ 3 lines	Rd-dara, lxa-Rd, KRD, KD-dara, PVD, Kd, Vd, Vd-dara, PD, PCD, Isa-PD
Relapse: ≥ 4 lines	Rd-dara, lxa-Rd, KRD, KD-dara, PVD, Kd, Vd, Vd-dara, PD, PCD, Isa-PD
Other	

the last several years with a significant improvement in outcomes. However, the access and availability of drugs remain variable and dictated by regional approval and reimbursement strategies. Consequently, practice patterns are variable and patient access is unequal. Given the rapidly accumulating data and available options, treatment decisions are not straightforward. To combat this disparity, the IMS has started the Therapeutic Map (TMAP) initiative. TMAP will be a computer-based program that will provide region/country-specific guidelines to help hematologist/oncologists in the care of multiple myeloma patients, by providing the user with availability and coverage information in each region or country. The TMAP steering committee includes 16 leaders in myeloma from nine countries, who have provided data from the United States, Australia, Brazil, Greece, Netherlands, France, Italy, Germany and Spain. Data is currently being collected for other countries and efforts in programming the map are underway. It is expected to launch in 2023.

### Available Agents

	Drug Combinations
Newly Diganosed MM	Bortezomib, lenalidomide, dexamathasone, melphalan, thalidomide, cyclophosphamide, daratumumab
First Relapse	Bortezomib, carfilzomib, , lenalidomide, dexamathasone, melphalan, thalidomide, cyclophosphamide, daratumumab, isatuximab
Relapse: 1-3 lines	Bortezomib, carfilzomib, ixazomib, lenalidomide, pomalidomide, dexamathasone, melphalan, thalidomide, cyclophosphamide, daratumumab, isatuximab
Relapse: ≥ 3 lines	Bortezomib, carfilzomib, ixazomib, lenalidomide, pomalidomide, dexamathasone, melphalan, thalidomide, cyclophosphamide, daratumumab, isatuximab
Relapse: ≥ 4 lines	Belatamab, selinexor, melflufen, idecel
Other	

# Interactions with the FDA

The outcomes for patients with multiple myeloma have improved with the introduction of new therapies and approaches to care. However, relapses are common and multiple myeloma remains a difficult disease to treat at that point so the need for new therapies remains. Recent trial results and developments in the field of multiple myeloma necessitate a discussion of the current paradigm to identify opportunities to facilitate future drug development of novel therapies in multiple myeloma and improve patient outcomes.

On November 8-9, 2022, the IMS will host a joint symposium with the FDA, which will provide a forum for open discussion among academia, industry and regulatory agencies about clinical drug development in multiple myeloma. This workshop will discuss trial design, patient population, and endpoints in the different multiple myeloma disease settings with an aim to advance the future of drug development in multiple myeloma. Ultimately, this meeting serves to engage stakeholders to discuss opportunities and challenges in designing trials applicable to the US patient population. A preliminary program is as follows:



## Food and Drug Administration (FDA) – International Myeloma Society (IMS) Workshop:

### Future of Drug Development in Multiple Myeloma (MM)

Day 1: November 8, 2022
Developing New Therapies for Patients with MM
Session 1 Welcome
Introduction

<b>Session 2 Trial Design considerations for novel therapies</b>
Lunch
<b>Session 3 Endpoints</b>
Break
<b>Session 4 External Validity of MM clinical Trials</b>
<b>Session 5 Real World Data and RWE</b>
Wrap-up of Day 1
<b>Day 2: November 9, 2022</b>
<b>Disease Setting Considerations for Novel Drug Development</b>
Welcome and Recap Day 1
<b>Session 6 Drug development in Newly Diagnosed MM</b>
Break
<b>Session 7 Maintenance therapy in MM</b>
Lunch
<b>Session 8 Drug Development in RRMM</b>
Break
<b>Session 9 Smoldering MM</b>
<b>Workshop Wrap Up</b>
Next Steps





[www.myelomasociety.org](http://www.myelomasociety.org)